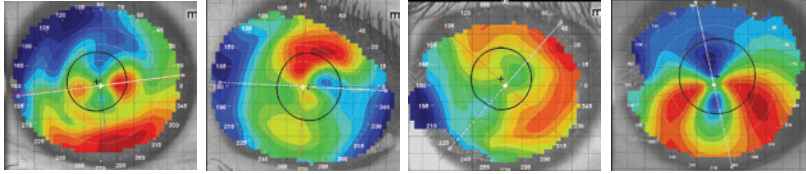


ICD FLEXFIT™

16.3mm



ICD FlexFit™ is featured in Paragon HDS® 100 material.

Scleral Lens for Irregular Corneas

Patients With:

- Keratoconus
- Pellucid Marginal Degeneration
- Post-Refractive Surgery
- Ocular Surface Disease
- Corneal Transplant(s)
- Kerato-globus

New Advancements in the ICD® Scleral Lens Design

- “Flex” the ICD FlexFit 16.3mm diameter from 15.5mm to 17.0mm in .1mm increments, based on ocular conditions, **for a custom fit**. Incremental adjustments to Sagittal Depth can be accomplished through changes to the Base Curve.
- The Auto-Adjusting design feature allows you to order a custom diameter, while maintaining the desired apical clearance of a diagnostically fit lens or an exchange from a previously ordered lens.

Due to the asymmetric nature of the sclera, the Dual Depth Periphery™ allows for the ICD FlexFit lens to land appropriately on the scleral, which provides greater comfort and rotational stability. Dual Depth Periphery™ is standard on each order.



Dual Depth Periphery™

- Provides Rotational Stability
- Improves Lens Fit
- Improves Comfort
- Improves Wearing Time

- ICD FlexFit is available in a front surface toric design when residual astigmatism exists.

PARAGON
HDS®100

ICD FlexFit™ is featured in
Paragon HDS®100 (dk 100*).



Global researches have determined through studies that toric peripheral scleral lenses, like Dual Depth Periphery improve fit, comfort and wearing time: Visser et al (2006), Schornack (2013), Visser et al (2013).