

# ICD

## FLEXFIT™

# 14.8mm

ICD FlexFit™ is featured in Paragon HDS® 100 material.

Comfort  
of a Soft Lens

Clarity  
of a GP Lens

For **Normal, Regular Corneas**

### Patient Types Who Can Benefit:

- Toric soft lens wearers who are unhappy with their vision
- Soft or GP lens dropouts, due to lack of comfort
- Dry eye symptoms
- Require protection from dry, dusty or windy environments
- Athletes, tweens and teens
- High Astigmat & High Prescriptions

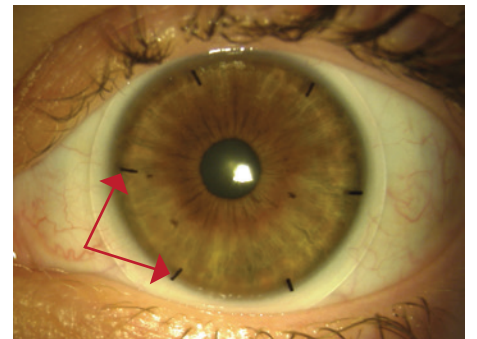


- “Flex” the ICD FlexFit 14.8mm diameter from 14.5mm to 15.5mm in .1mm increments, based on ocular conditions, **for a custom fit.**

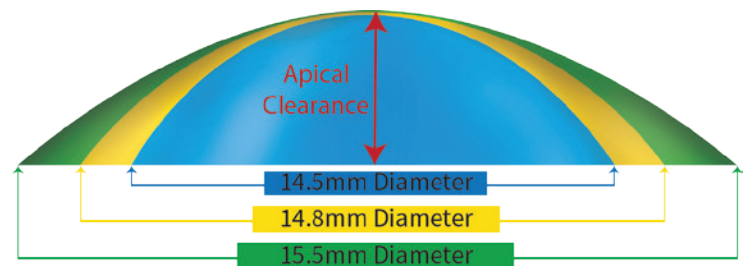
- ABB OPTICAL GROUP is excited to introduce the new patent-pending technology of using scribe marks<sup>1</sup> to ensure limbal clearance when fitting the ICD FlexFit™ 14.8mm diameter.

- The Auto-Adjusting design feature permits the practitioner to “flex” the diameter +/- while maintaining a desired level of apical clearance. This design advancement eliminates the need for the practitioner to calculate adjacent zones, which saves valuable chair time and minimizes errors.

- ICD FlexFit™ uses tangent angles, versus curves, delivering optimal peripheral corneal and limbal clearance. The Scleral Landing Zone shape, creates a forgiving lens-to-sclera surface relationship.



Scribe Marks



The Auto-Adjusting Feature Maintains Apical Clearance

PARAGON  
HDS®100

ICD FlexFit™ is featured in  
Paragon HDS®100 (dk 100\*).

KATT  
DESIGNGROUP